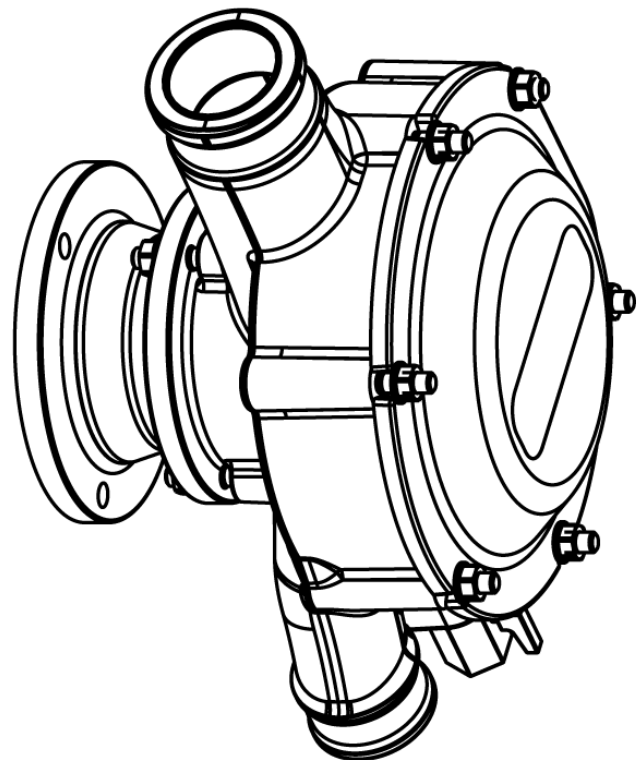
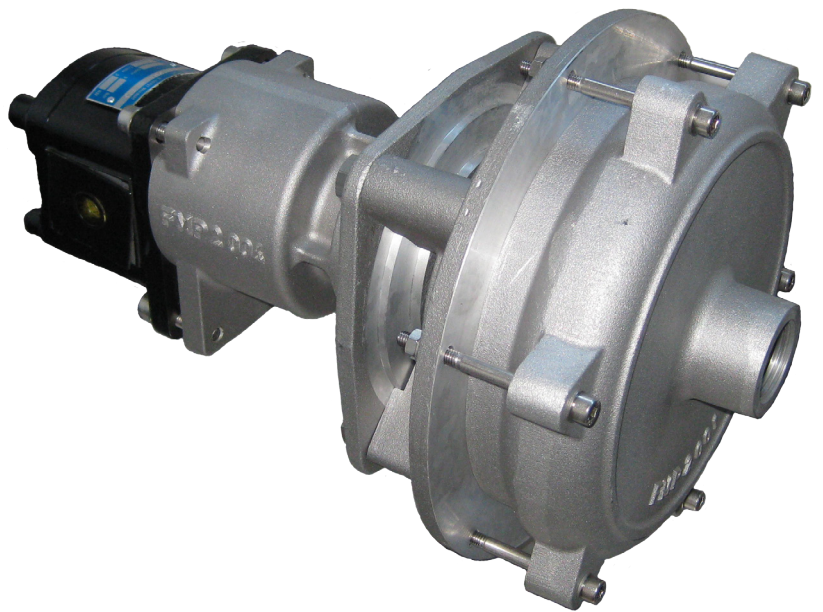


## Truck mixer pumps Series FMP

- Overview of products
- Executions
- Materials
- Types of seals
- Sectional and dimensional drawings





## General description

Centrifugal pumps series FMP are single stage, normal priming centrifugal pumps for installation on or in vehicles or construction machines.

## Fields of application

Main field of application for the truck mixer pumps series FMP is the addition of water into the drum of truck mixers and the cleaning of this vehicles after emptying the drum. Due to the execution, the pumps are either suitable for direct installation on the drum drive or the implementation into the hydraulic system.

- installation on truck mixers
- mobile pump stations with hydraulic systems
- conveying of liquids on vehicles

## Operating data

Flow:	Q up to 30 m <sup>3</sup> /h
Total head:	H up to 50 m
Motor power:	differs, depending on the drive

## Connections

The pumps have suction and discharge connections with inner threads. The dimension of the threads can be seen in the dimensional drawing. Additionally the FMP3 is prepared for the direct connection of hoses.

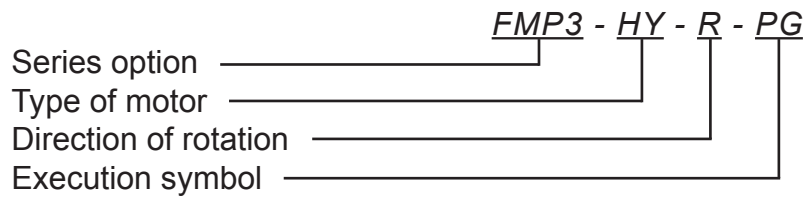
Adapters for other dimensions of threads or flanges are available on request.

## Motors

As motors are, depending on the mounting situation, hydraulic motors, single or triple phase motors or the auxiliary connection of a gear box possible.

Degree of protection:	IP 55
Direction of rotation:	Clock-wise or Counter-clock-wise, depending on the pump

## Type code



### Series option:

- FMP3 - pump with one discharge and two suction connections  
 FMP2 - pump with one suction and one discharge connection

### Type of motor:

- HY - Bowex-coupling for direct installation on the drum gear  
 - hydraulic motor  
 GL - DC motor

### Direction of rotation:

- R - Clock-wise  
 L - Counter-clock-wise

### Execution symbol:

- PG - standard version with threaded connections

## Materials

Part	Material code		
	Y101	Y203	Y501
Casing	GG 25	G-ALSi10Mg	1.4408
Casing cover	GG 25	G-ALSi10Mg	1.4408
Impeller	GG 20	GG 20	1.4408
Shaft	1.4021	1.4021	1.4462
Bearing bracket	GG 20	GG 20	GG 20

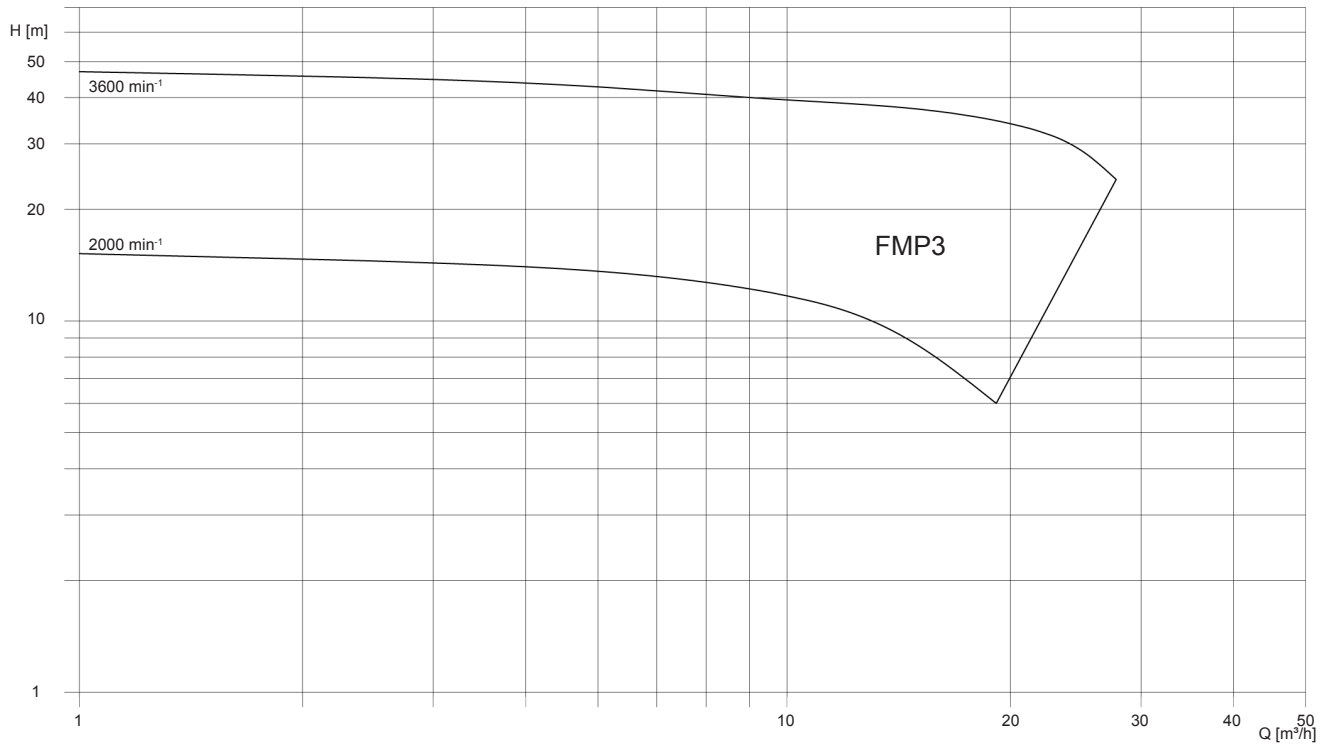
Other Materials are available on request.

## Types of seals

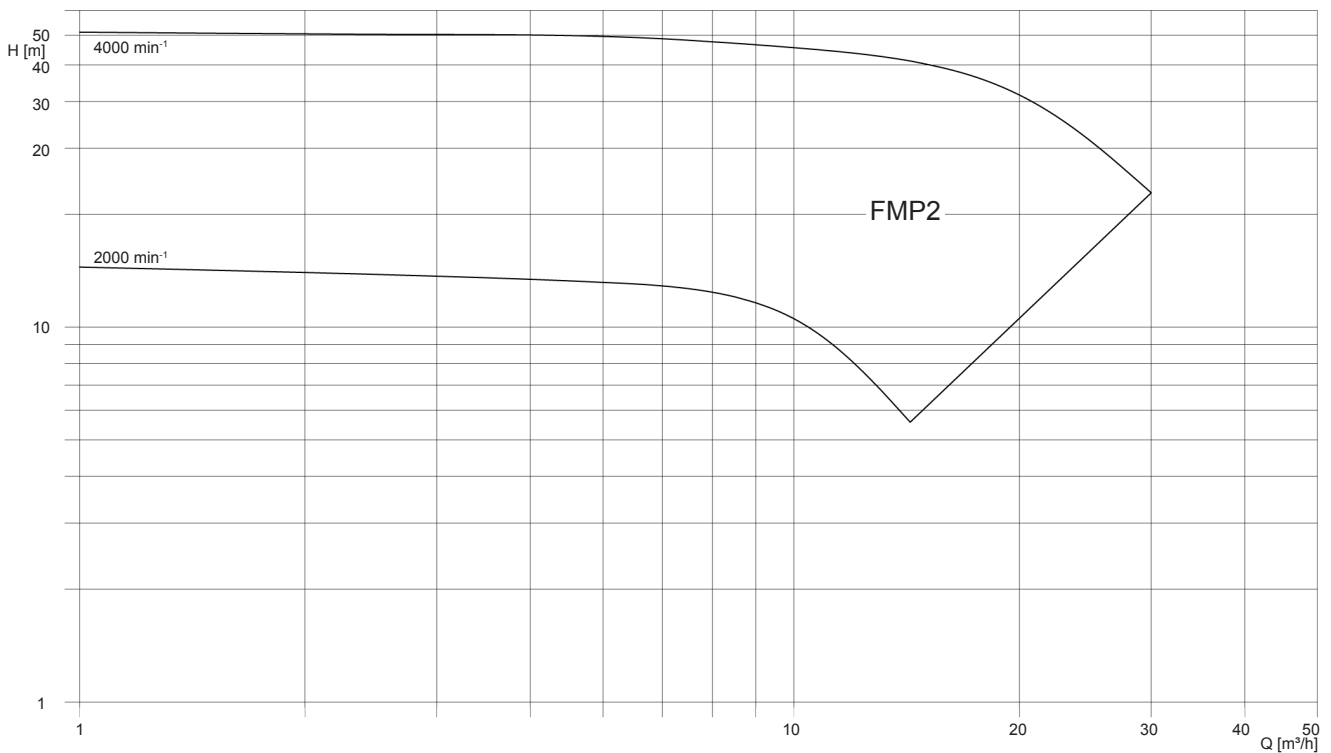
Part	Sealing code				
	Z101	Z102	Z103	Z104	Z105
Seal face	Carbon	Carbon	Carbon	SiC	SiC
Stationary seat	SiC	SiC	SiC	SiC	SiC
Rubber parts	P / NBR	V / FKM	E / EP	V / FKM	E / EP
Metal parts	1.4571	1.4571	1.4571	1.4571	1.4571

Other types of seals are available on request.

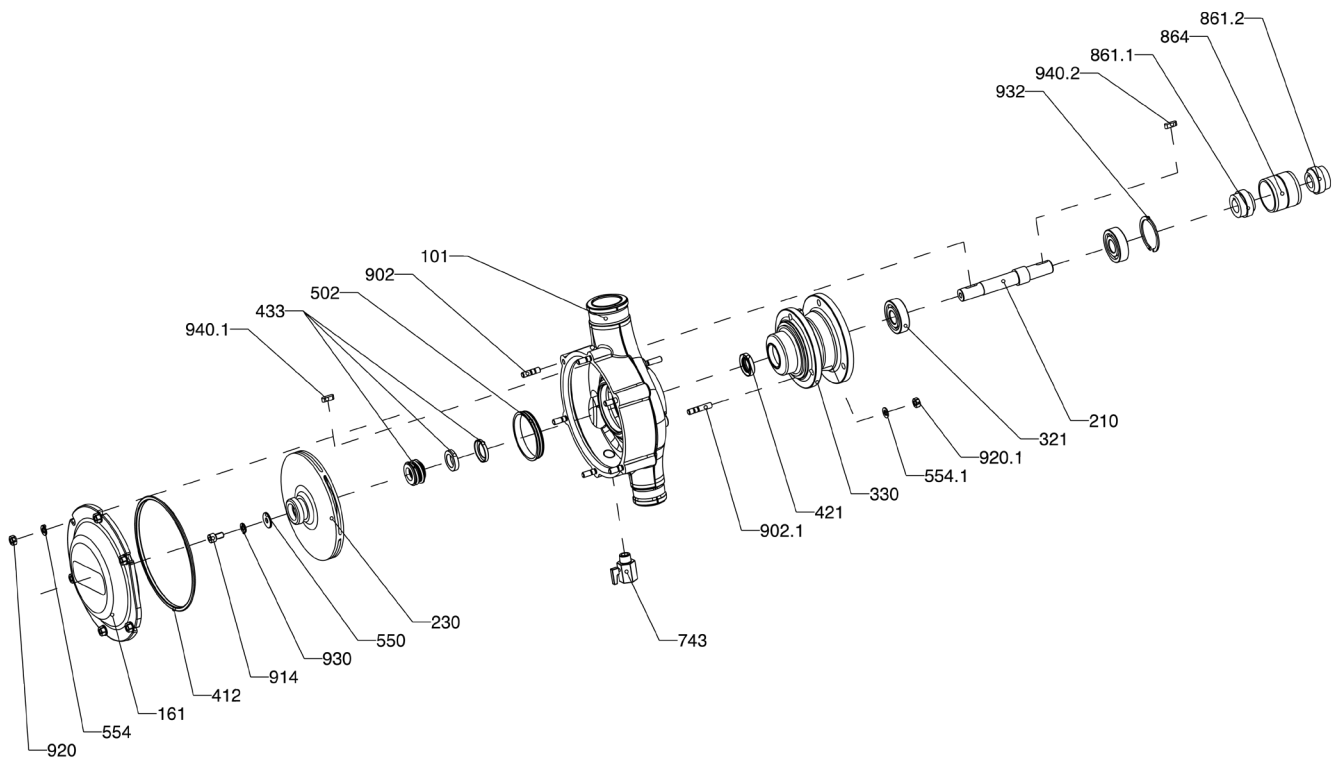
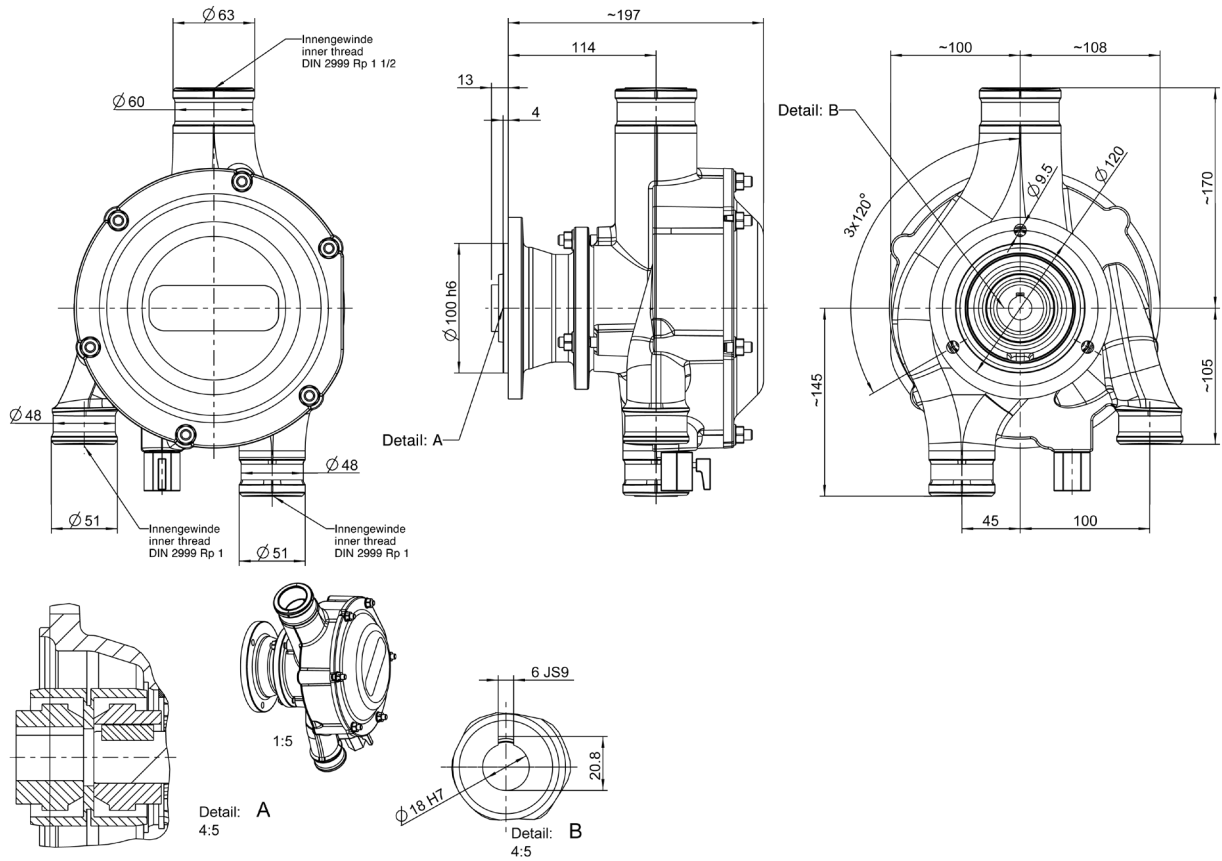
Characteristic curve FMP3



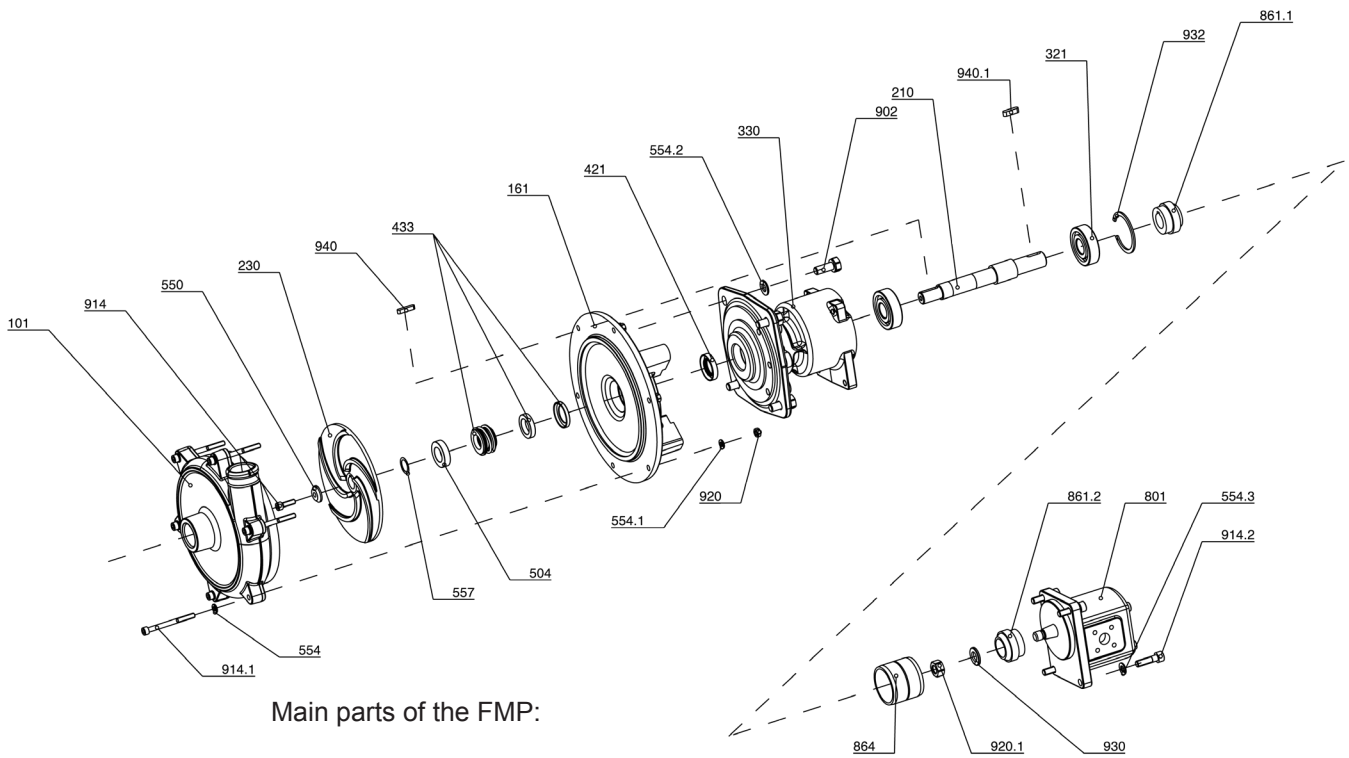
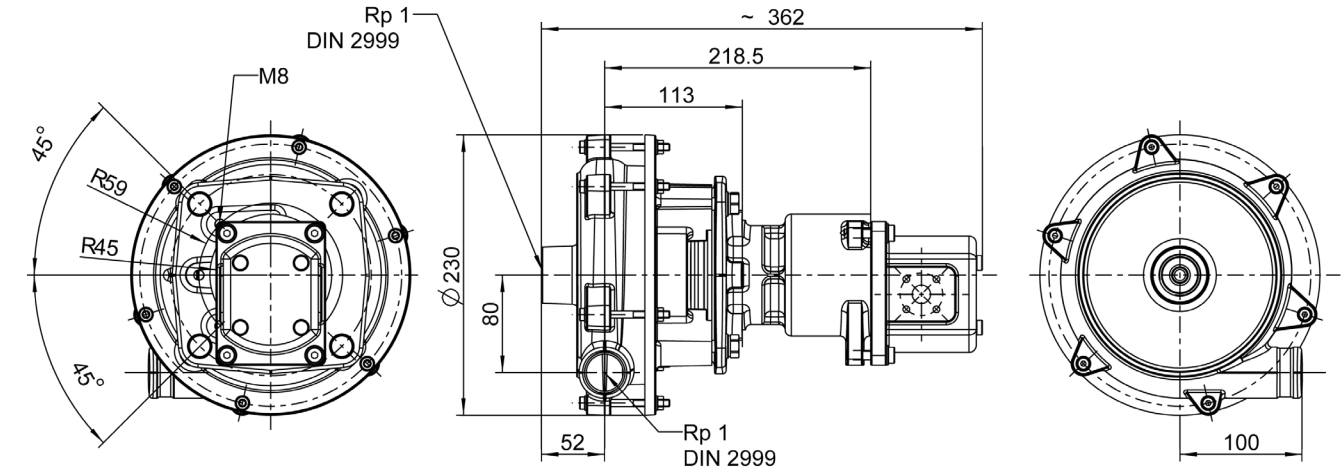
Characteristic curve FMP2



## Dimensional and sectional drawing FMP3-PG



Dimensional and sectional drawing FMP2-HY



Main parts of the FMP:

- 101 Casing
- 161 Casing cover
- 210 Shaft
- 230 Impeller
- 321 Radial ball bearing
- 330 Bearing bracket
- 433 Mechanical seal
- 861 + 864 Coupling

additionally for the FMP2:

- 801 Hydraulic motor

Truck mixer pumps  
Series FMP

---

Specifications subject to change without notice



Edition 05/2012